



SMOOTHSHAPES® XV

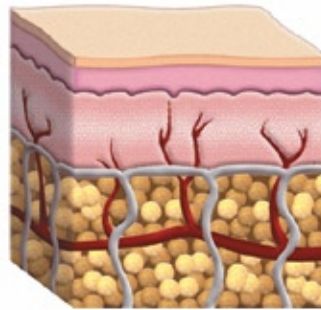


LONG LASTING RESULTS YOU CAN SEE AND FEEL

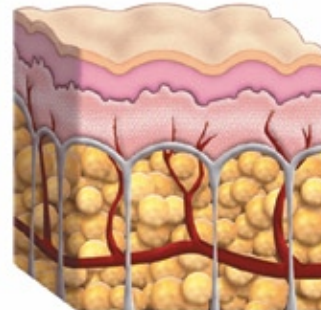
STOP BLAMING YOURSELF!

Cellulite is a skin condition that affects over 85-98% of women. It can not be improved with diet, exercise or even weight loss alone.

Cellulite appears when fat cells just under the skin swell or enlarge and the once flexible collagen bands become brittle and no longer stretch properly.



Normal



Cellulite

STOP BLAMING YOURSELF!

- **Increased body fat is not the major factor for the appearance of most cellulite.**
- **Women of average weight frequently have cellulite.**
- **Cellulite is also apparent in lean and fit females.**
- **Cellulite is rarely apparent in males.**

SMOOTHSHAPES®: LONG LASTING RESULTS THAT YOU CAN SEE AND FEEL

The SmoothShapes® system is designed to address the physical manifestations of cellulite and its underlying causes. SmoothShapes produces results that patients can see and feel.

Physical Manifestations:

- Inflexible Collagen Bands**
- Enlarged Fat Cells**
- Skin Laxity**

Underlying Causes of Cellulite:

- Gender Differences in Skin Architecture**
- Hormonal Factors**
- Vascular Changes**
- Inflammation**

Photomology®:

- Smooths the Appearance of the Skin**

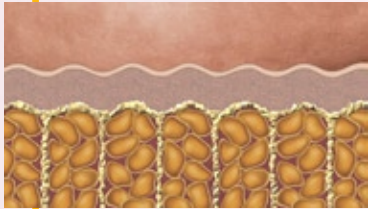
THE ANSWER: SMOOTHSHAPES®



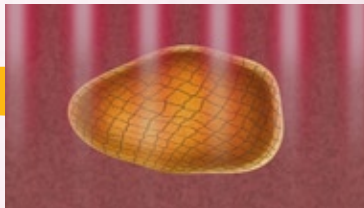
The SmoothShapes® system with proprietary Photomology® technology is FDA cleared to market for the temporary reduction in the appearance of cellulite. The treatment is safe and has no downtime. Specific areas can be treated in as few as 20 minutes.

Photomology works because it addresses the underlying causes of cellulite and the physical manifestations.

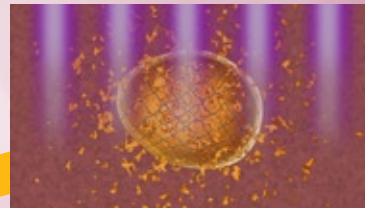
PHOTOMOLOGY® TECHNOLOGY: HOW IT WORKS



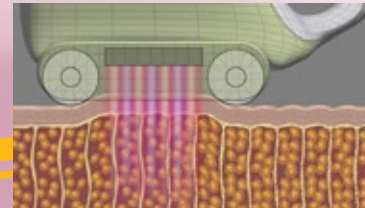
1. Skin affected by enlarged fat cells and inflexible connective collagen contribute to the appearance of cellulite.



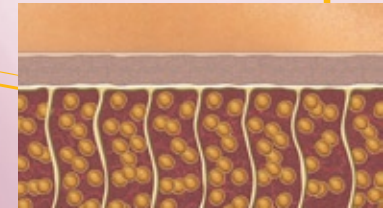
2. Light energy makes the fat cell membrane permeable.



3. Laser energy absorbed in fat, elevates its temperature and makes it easier for the liquefied fat to move out of the cell.



4. Rollers and suction move fat from intracellular space into the lymphatic system for elimination by the body.



5. Results are an improved appearance of cellulite with tighter, smoother skin.

Photomology® combines dynamic laser and light energy with mechanical manipulation (vacuum and massage) to specifically impact the tissue components responsible for the appearance of cellulite and smooth the appearance of skin.

WHAT TO EXPECT DURING TREATMENT PROGRAM

A SmoothShapes® regimen requires eight treatment sessions.

Treatments feel like a deep tissue massage; patients find it relaxing.

There is no pain medication required when receiving treatment and there is no downtime.

Consult with your SmoothShapes provider to decide which areas to treat and how many treatments are recommended to improve the appearance of cellulite. Treatment times vary depending on how many areas you select.



WHAT DOES CELLULITE LOOK LIKE?

The physical manifestation of cellulite falls into three categories.

These conditions are usually visible to the human eye.

SmoothShapes® can improve all three categories and create long lasting results that you can see and feel.

Your SmoothShapes provider will discuss which conditions bother you most and the treatment program for best results.

Visual signs of cellulite:

Dimpling

Projections and Bumps

Linear Depressions

See photos on the next three pages

CELLULITE ASSESSMENT: DIMPLING

Dimpling on front of thigh



Dimpling on buttocks



Dimpling on back and side of thigh

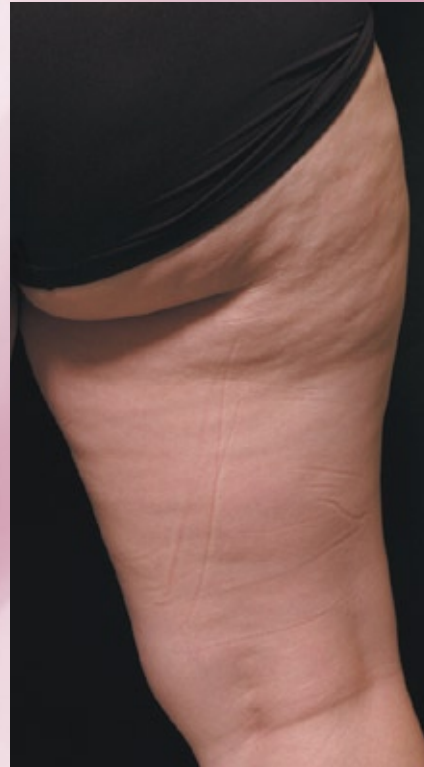


CELLULITE ASSESSMENT: PROJECTIONS AND BUMPS

**Projections and bumps
on back of thigh**



**Projections and bumps
on buttocks**



**Projections and bumps
on front and side of thigh**

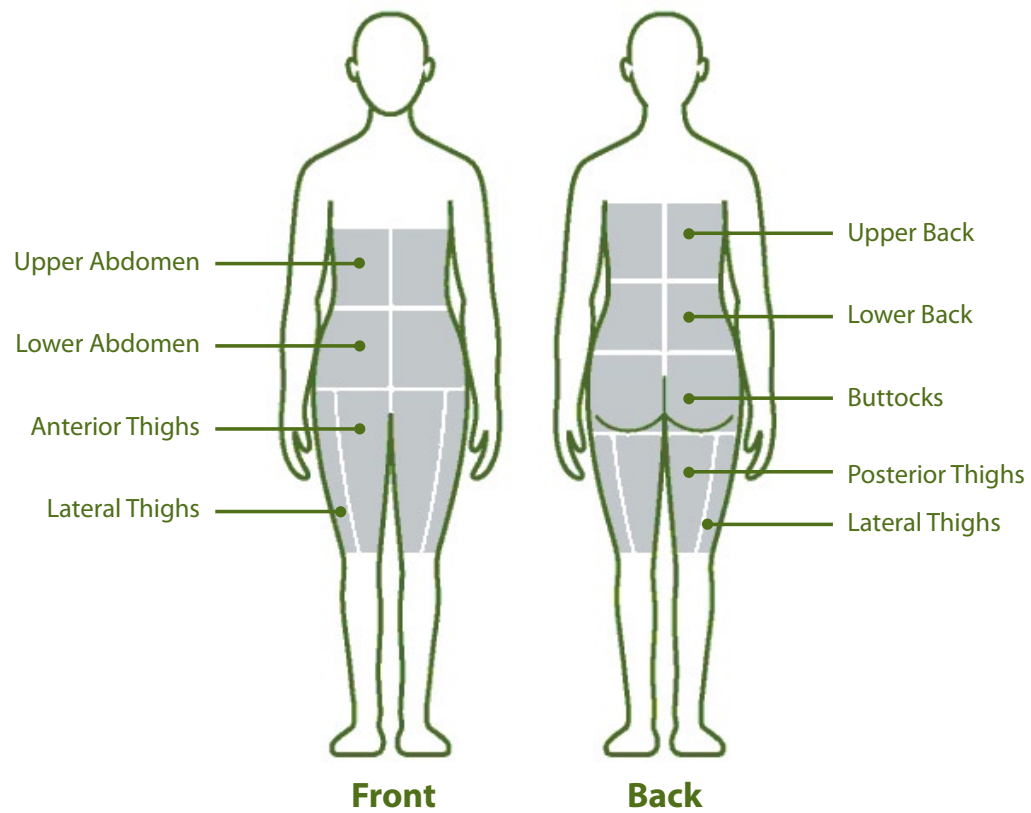


CELLULITE ASSESSMENT: LINEAR DEPRESSIONS

Linear depressions are most common on back of thigh and buttocks



SMOOTHRESULTS IN MULTIPLE TREATMENT AREAS



SMOOTHRESULTS

Results improve dimpling and linear depressions on buttocks and side of thighs.



Pre Treatment



One Month After Treatment Series

Photos courtesy of Robert Weiss, MD

SMOOTHRESULTS

Results improve projections and bumps plus linear depressions on lower buttocks and upper thighs.



Pre Treatment



One Month After Treatment Series

Photos courtesy of
Vivian Bucay, MD

SMOOTHRESULTS

Results improve linear depressions on back of upper thighs.



Pre Treatment



One Month After Treatment Series

Photos courtesy of
Kenneth Beer, MD

SMOOTHRESULTS

Results improve dimpling and smoothness on lower buttocks and side of thigh.



Pre Treatment



5 Months After Treatment Series

Photos courtesy of
Khalil A. Khatri, MD

SMOOTHRESULTS

Results improve dimpling and smoothness on front of thigh and top of knee. Results maintained at six months.



Pre Treatment



3 Months After Treatment Series



6 Months After Treatment Series

Photos courtesy of Khalil A. Khatri, MD

SMOOTHRESULTS

Results improve projections and bumps plus linear depressions on lower buttocks and middle thighs.



Pre Treatment



One Month After Treatment Series

Photos courtesy of
Kenneth Beer, MD

SMOOTHRESULTS

Results improve dimpling and linear depressions on front of thighs.



Pre Treatment

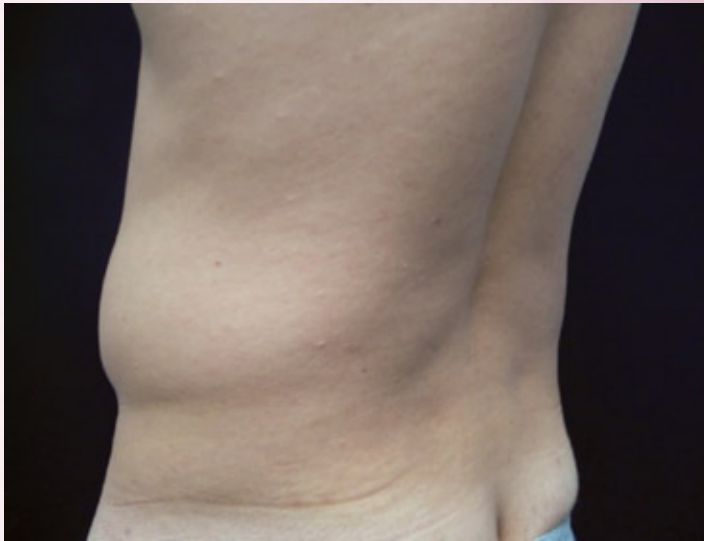


Immediately Post Treatment 8

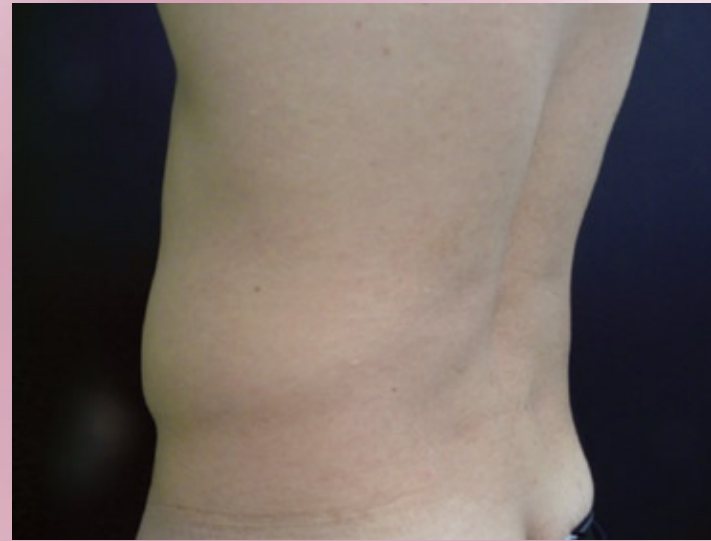
Photos courtesy of
Kenneth Beer, MD

SMOOTHRESULTS

Results improve dimpling and linear depressions on the back and side.



Pre Treatment



Immediately Post Treatment 8

Photos courtesy of
Leyda Bowes, MD

SMOOTHRESULTS

Results improve dimpling and linear depressions on back and side of thighs.



Pre Treatment



6 Months Post Laser Lipolysis
Plus
4 SmoothShapes Treatments

Photos courtesy of
Miles Graivier, MD

SMOOTHRESULTS

Results improve dimpling and linear depressions on front and side of thighs.



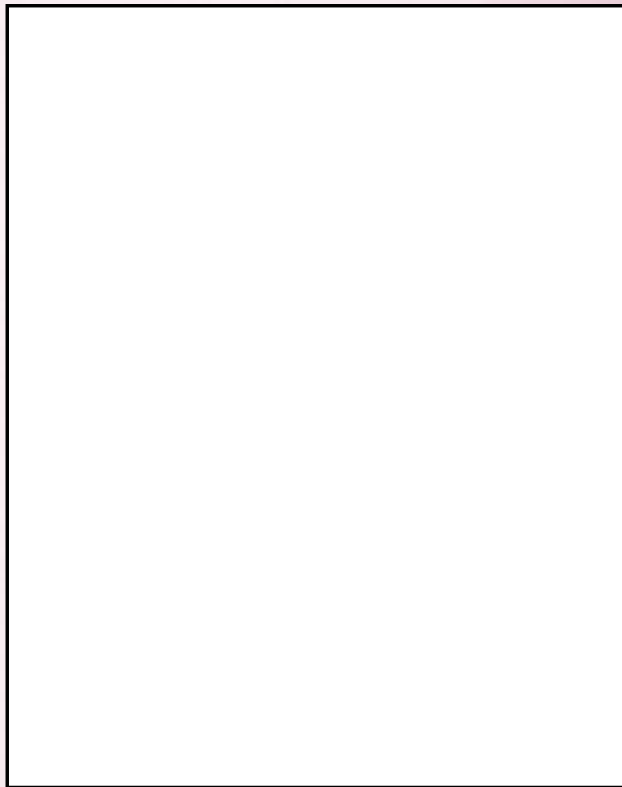
Pre Treatment



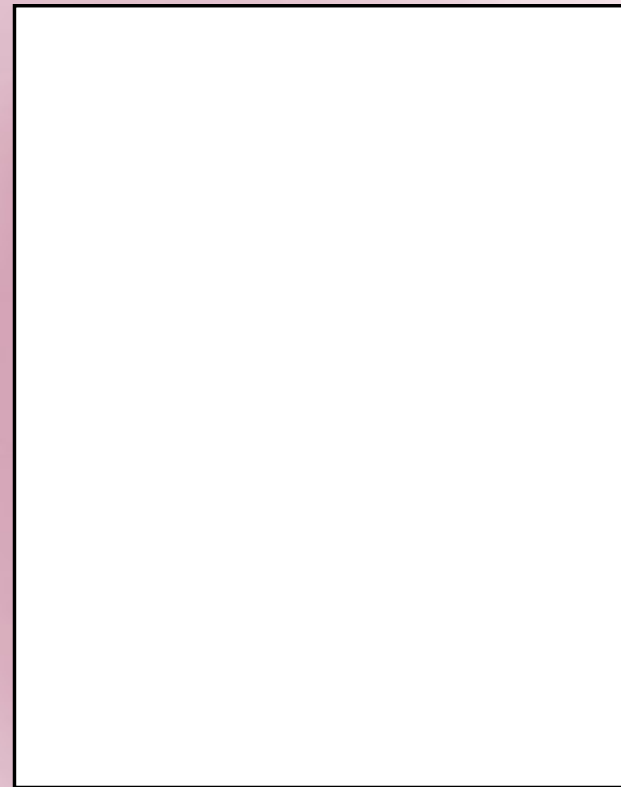
6 Months Post Laser Lipolysis
Plus
4 SmoothShapes Treatments

Photos courtesy of
Miles Graivier, MD

SMOOTHRESULTS

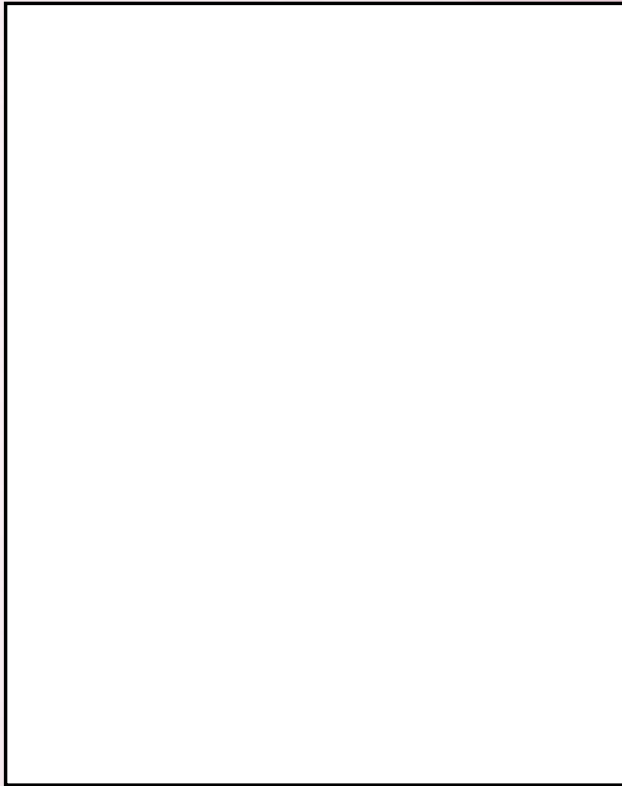


Current Photo Here



Your Results Here

SMOOTHRESULTS

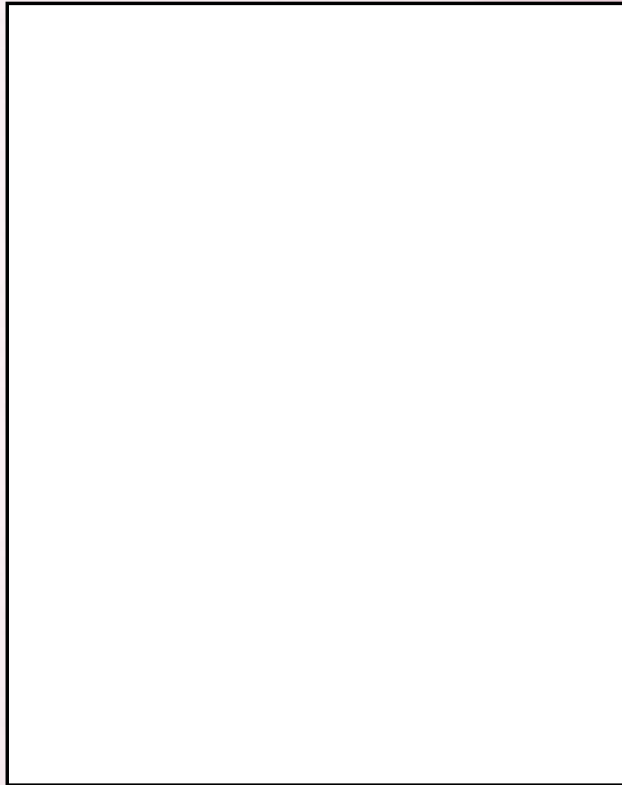


Current Photo Here

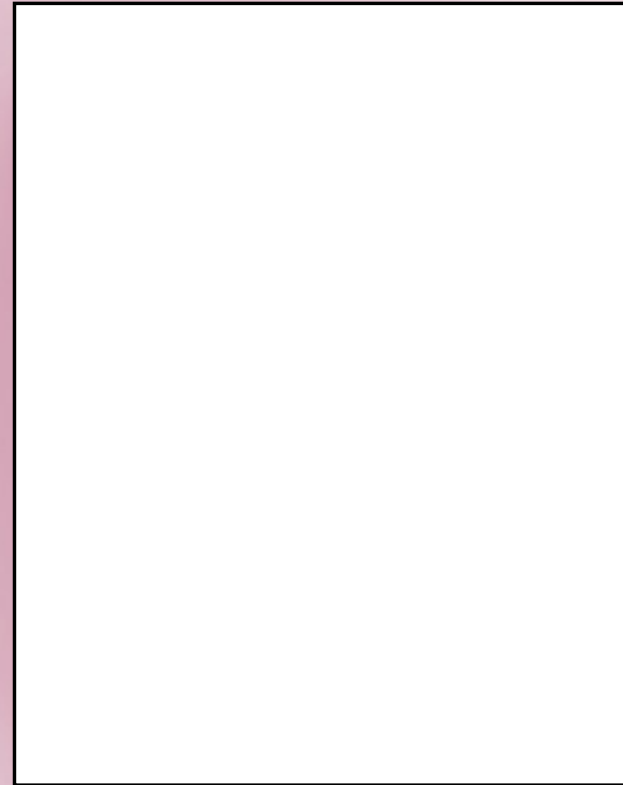


Your Results Here

SMOOTH RESULTS



Current Photo Here



Your Results Here

CELLULITE IS NOT YOUR FAULT

- **SmoothShapes® treatments are safe, comfortable and relaxing.**
- **SmoothShapes treatments require no pain medication or downtime.**
- **SmoothShapes will give you long lasting results you can see and feel.**
- **Get your own results by starting your SmoothShapes treatments today!**



SMOOTHSHAPES[®] XV

Rejuvelaser MedSpa/Shu Cosmetic Surgery Institute
One Stop Medical Center

6545 France Avenue S, Suite 480, Edina, MN 55435
Tel: 952-922-9999, Fax: 952-922-9998
Email: info@shuMD.com
www.shumedspa.com
www.rejuvelaser.com

